

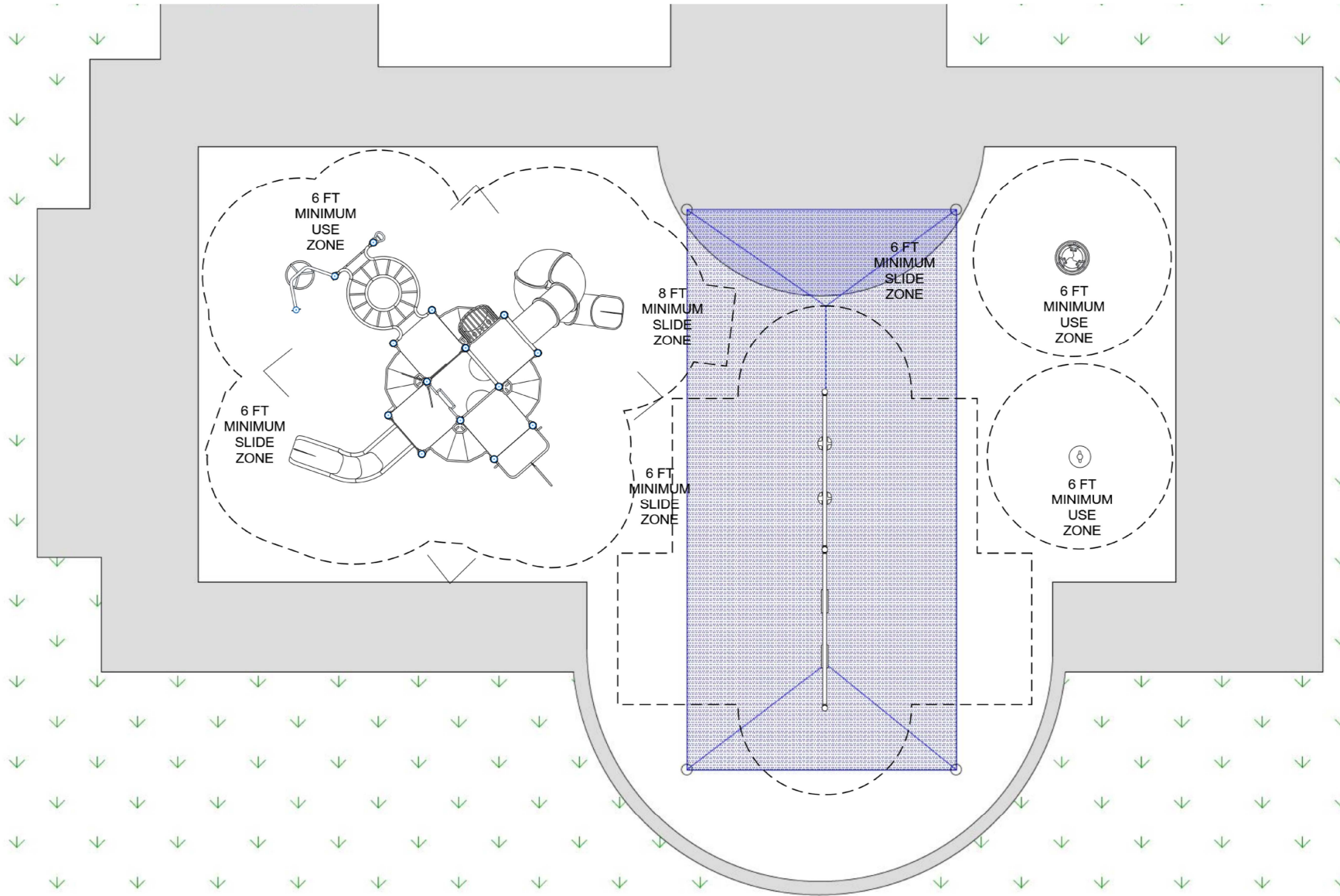
CHAPARRAL SITE PLAN

ADA ACCESSIBILITY GUIDELINE - ADAAG CONFORMANCE

ELEVATED	ACCESSIBLE	RAMP ACCESSIBLE	GROUND	TYPES
7	6/4	0	13/2	5/2

R5

FOR KIDS
AGES
5-12



GENERAL NOTES:

This Preliminary Site Plan is based on measurements that were provided in the initial planning phase. All dimensions must be verified prior to the submission of a purchase order. Playcraft Systems will not be held responsible for any discrepancies between actual dimensions and dimensions submitted in the planning phase.

The Minimum Use Zone for a play structure is based on the product design at the time of proposal. Components and structure designs may be subject to change which may affect dimensions. Therefore, before preparing the site, we strongly recommend obtaining final drawings from the factory (available after the order is placed and included in the Assembly Manual).

WARNING: Accessible safety surfacing material is required beneath and around this equipment that has a critical height value (Fall Height) appropriate for the highest accessible part of this equipment. Refer to the CPSC'S Handbook For Public Playground Safety, Section 4: Surfacing.

PROJECT#: PAC18D14EFA

DATE: 11/19/2018 | DRAWN BY: AMS

MIN. USE ZONE: 72' x 48'

PLAYCRAFT REP:

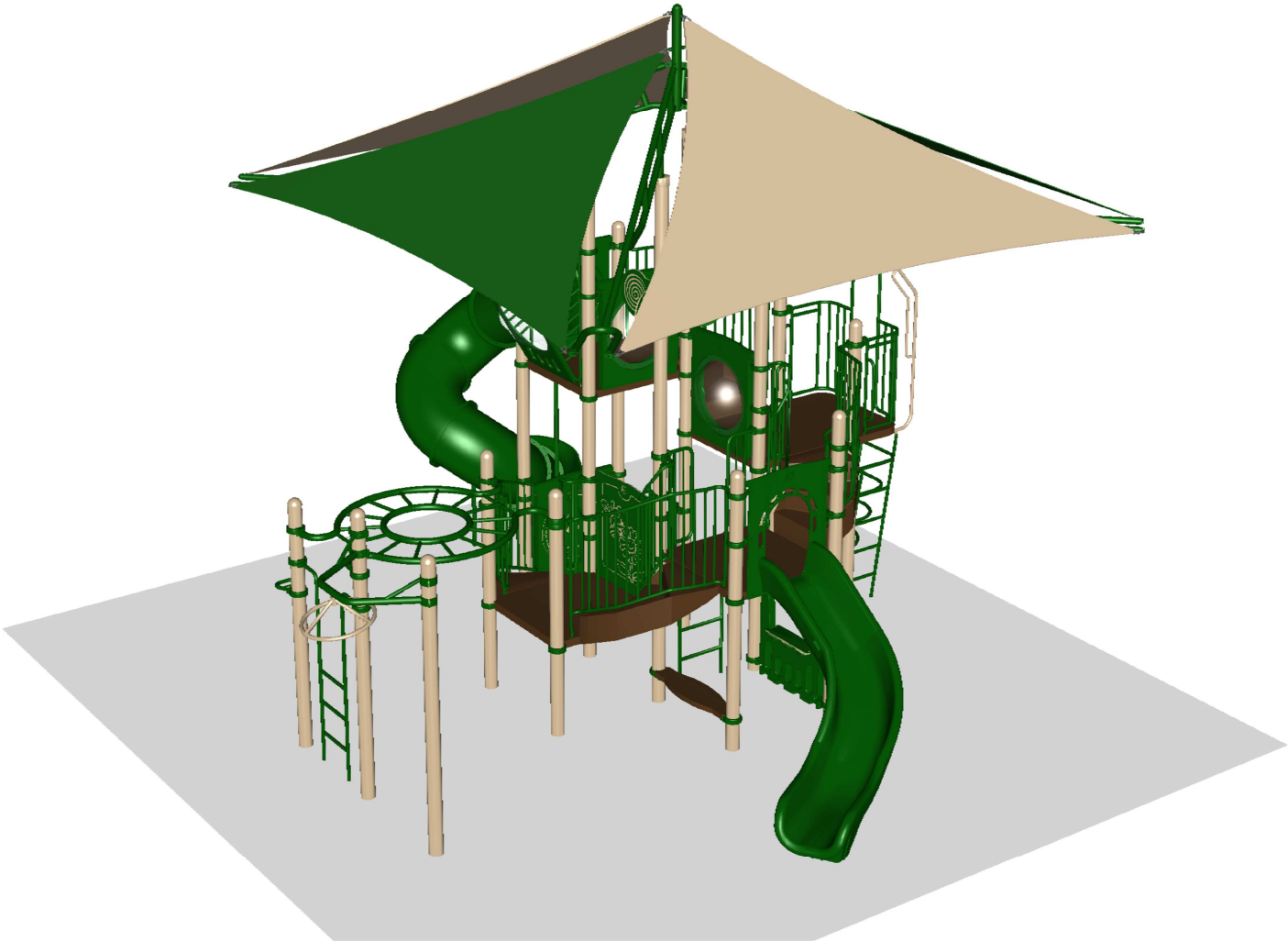
Pacific Play Systems, Inc.



CHAPARRAL
SW VIEW

R5

FOR KIDS
AGES
5-12



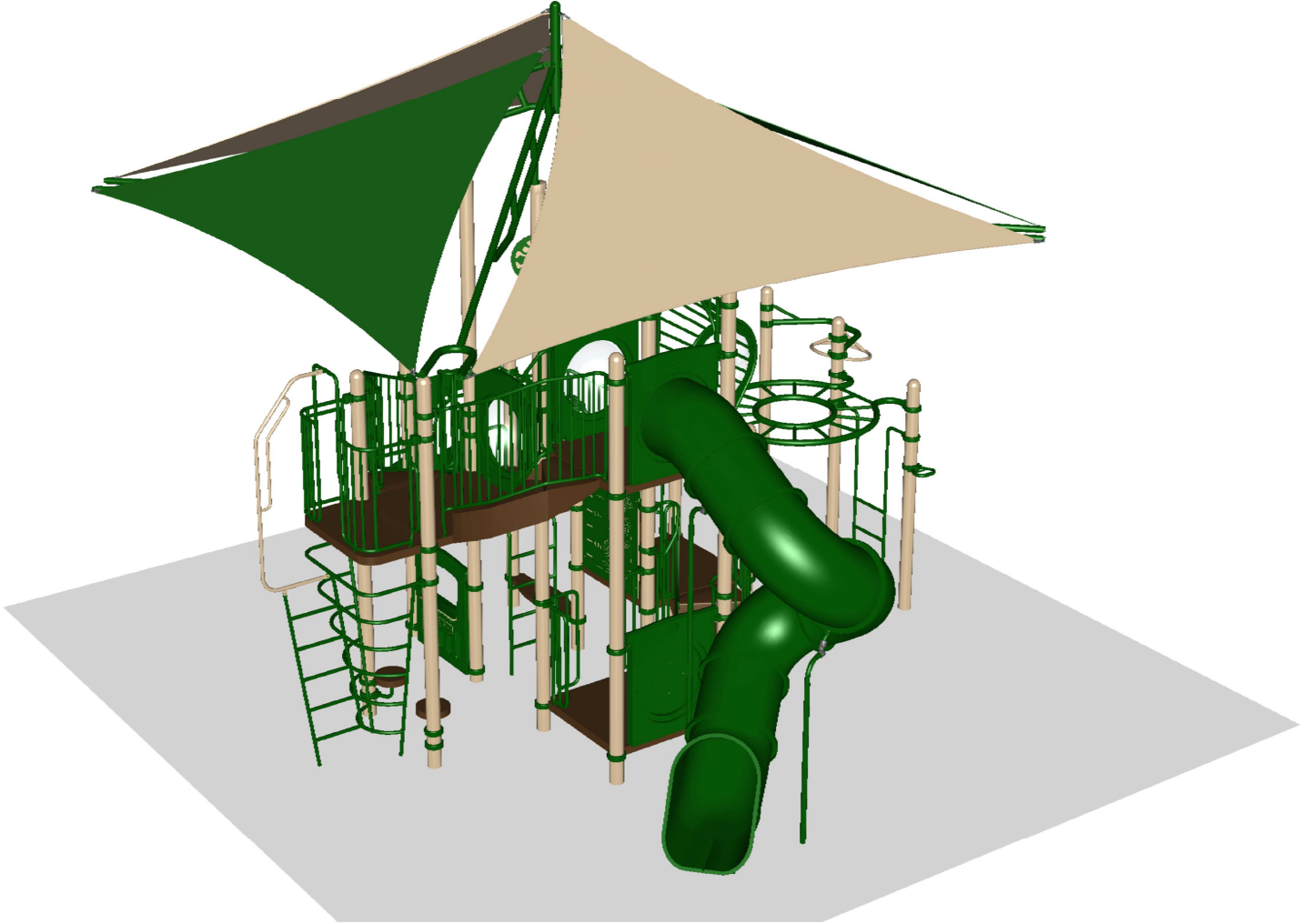
STRUCTURE#: R507406FA
PROJECT#: PAC18D14EFA
DATE: 11/19/2018 | DRAWN BY: AMS



CHAPARRAL
NE VIEW

R5

FOR KIDS
AGES
5-12



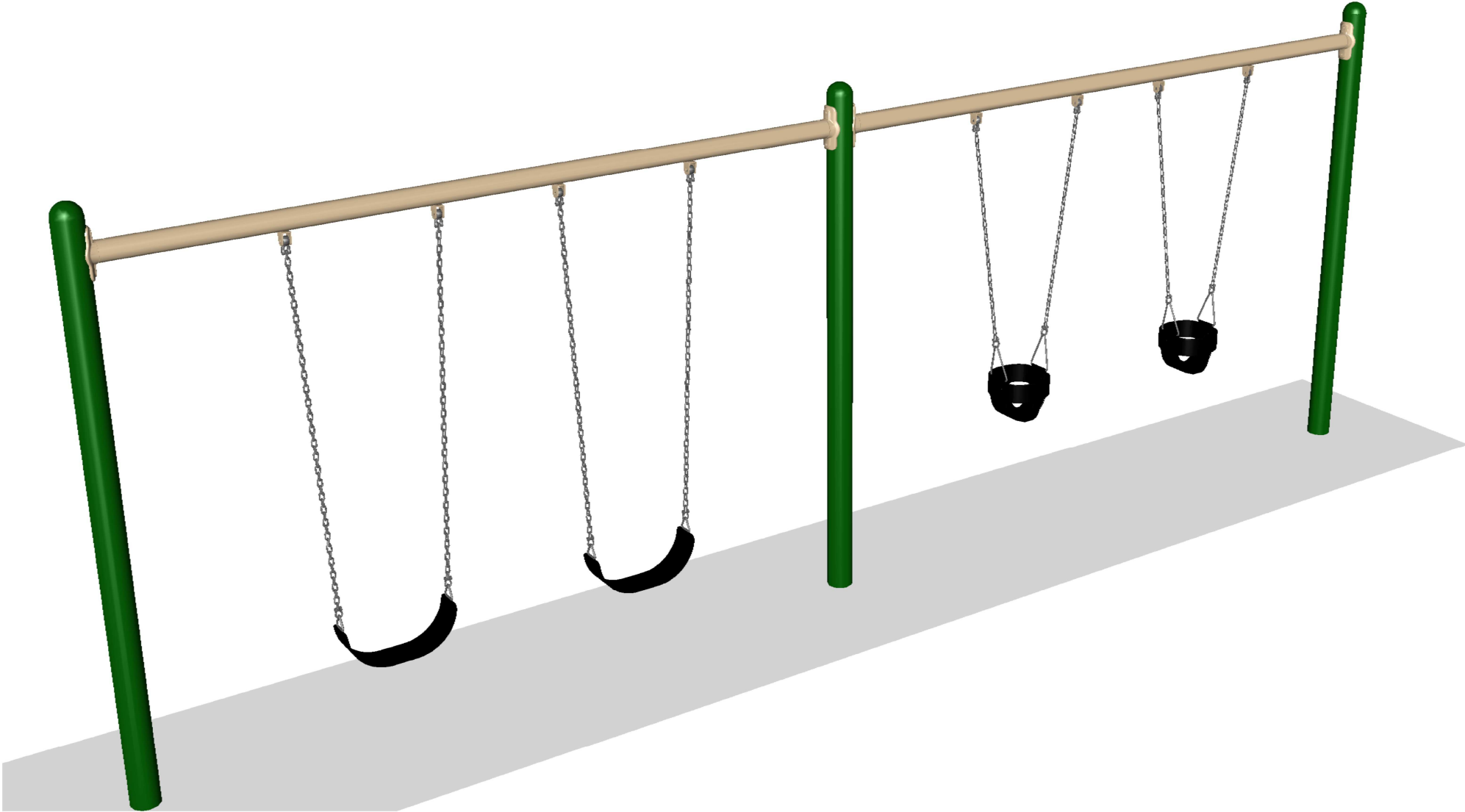
STRUCTURE#: R507406FA
PROJECT#: PAC18D14EFA
DATE: 11/19/2018 | DRAWN BY: AMS



CHAPARRAL
SW VIEW

R5

FOR KIDS
AGES
5-12



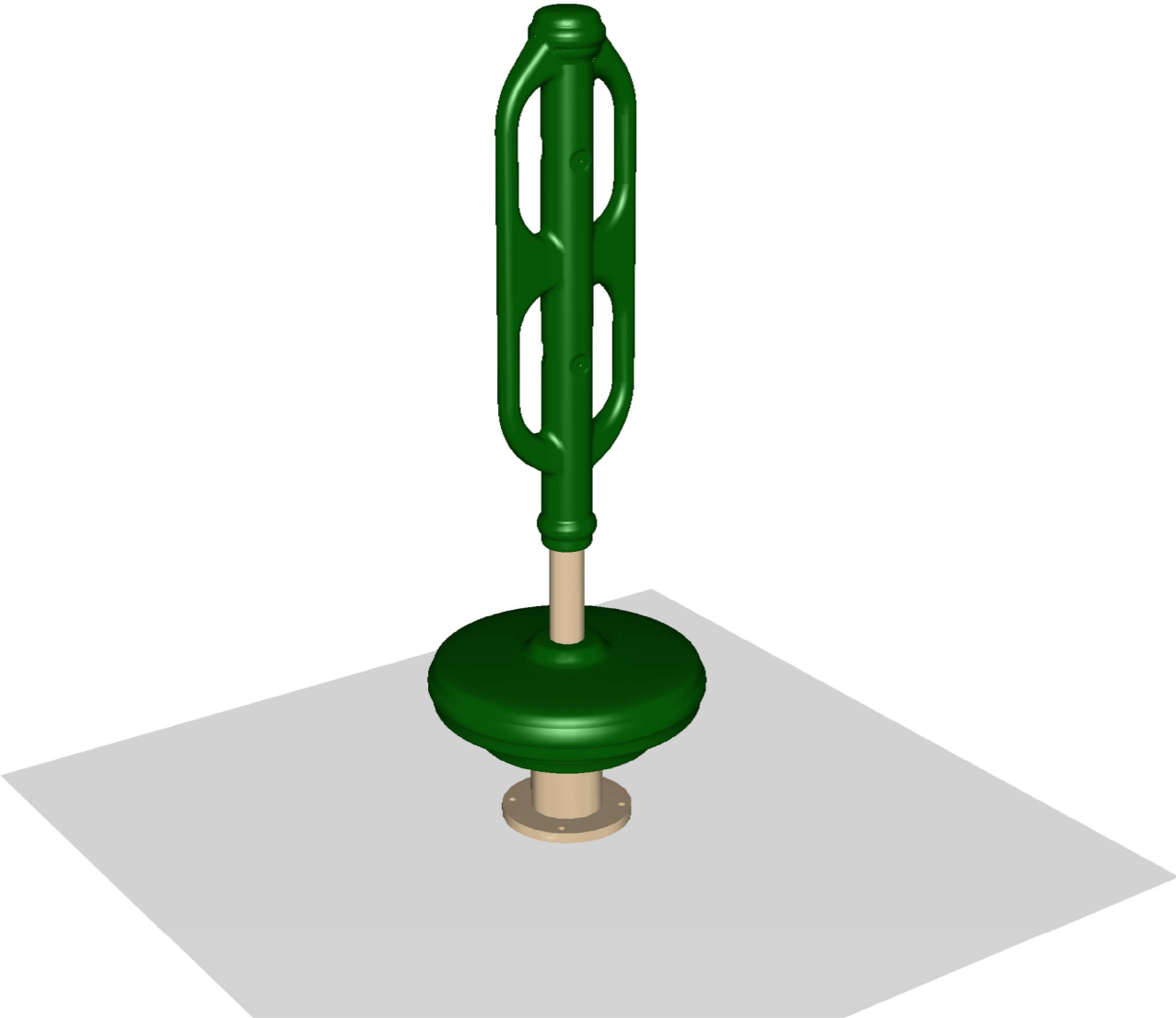
STRUCTURE#: FREPC2181+AB
PROJECT#: PAC18D14EFA
DATE: 11/19/2018 | DRAWN BY: DDJ



CHAPARRAL
SW VIEW

R5

FOR KIDS
AGES
5-12



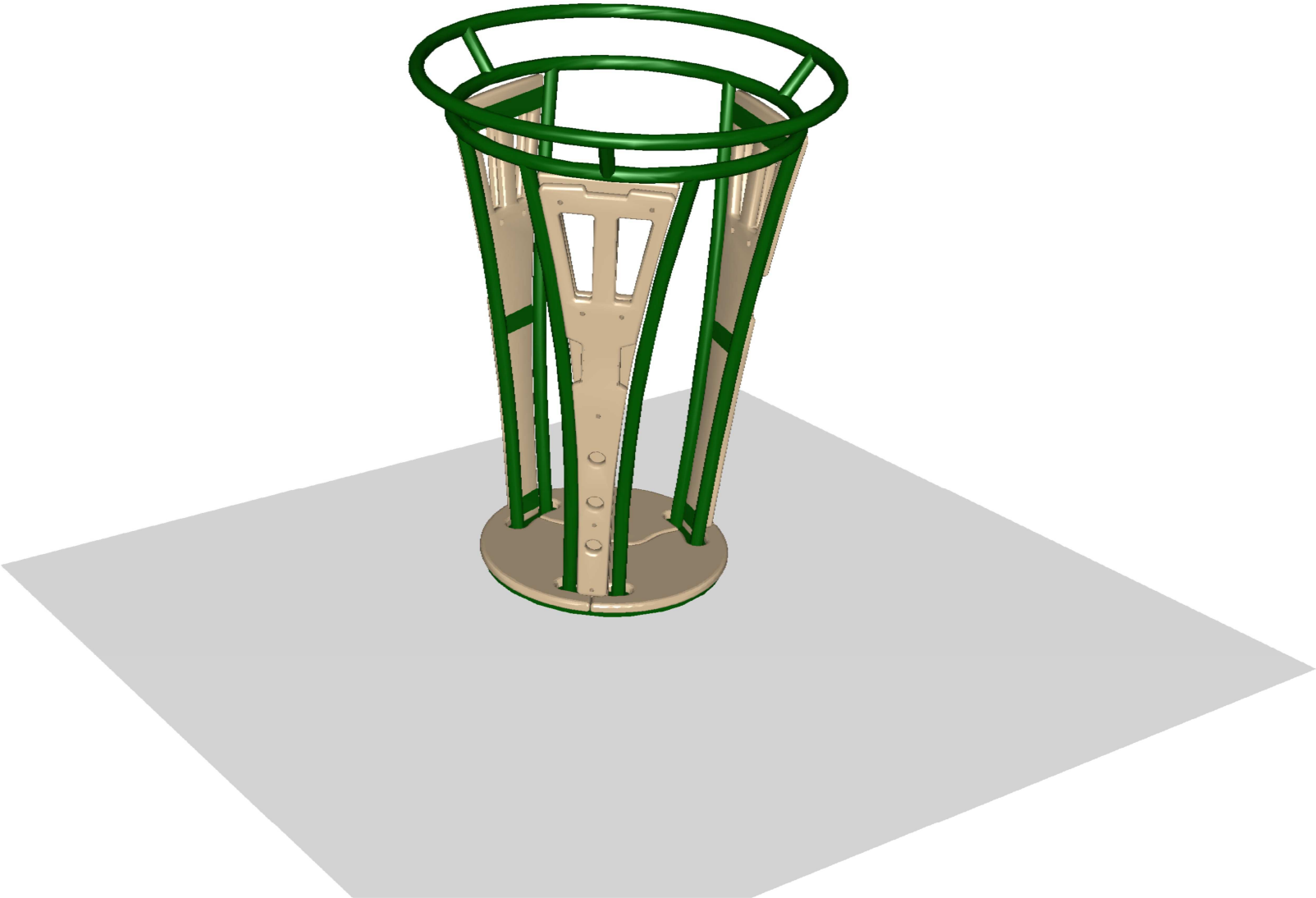
STRUCTURE#: FREPC2475
PROJECT#: PAC18D14EFA
DATE: 11/19/2018 | DRAWN BY: AMS



CHAPARRAL
SW VIEW

R5

FOR KIDS
AGES
5-12



STRUCTURE#: FREPC2474
PROJECT#: PAC18D14EFA
DATE: 11/19/2018 | DRAWN BY: AMS

