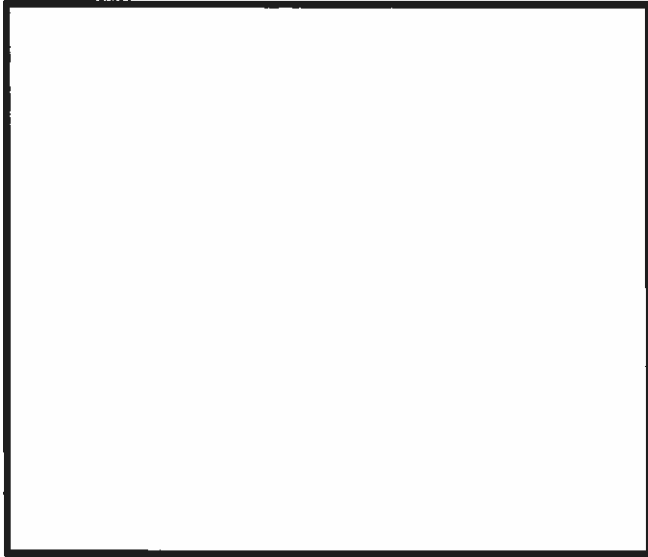
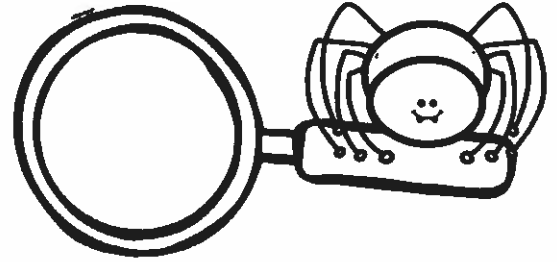


Spider Web Scavenger Hunt

Name: _____

Directions: Look outside and inside for spider webs. Draw a picture of what the webs look like and answer the questions.



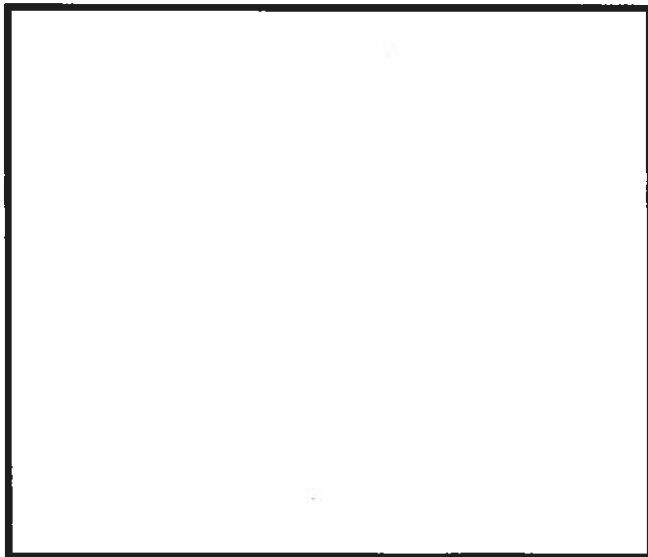
What type of web is it?

☐ orb ☐ sheet ☐ funnel

☐ tangle ☐ triangle

Where did you find it?

Something Important to Note: _____



What type of web is it?

☐ orb ☐ sheet ☐ funnel

☐ tangle ☐ triangle

Where did you find it?

Something Important to Note: _____

Types of Spider Webs

TANGLED WEBS:



Tangled webs are a jumble of silk threads. They are usually not sticky. The messy threads confuse and trap insects. Most of the time, the spider hangs upside down in the middle and waits for its prey. This little spider is about ready to wrap up his lunch!

SHEET WEBS:



Sheet webs are flat webs found mostly along the tops of bushes or grass. Spiders repair any damaged parts of a sheet web so they last a long time. I found this sheet web across the top of a boxwood shrub in my front yard.

COBWEBS:



Cobwebs are what we think of as abandoned spider webs that have collected dirt and dust. Look for them in corners, on the ceiling, and the sides of walls.

ORB WEBS:



Orb weaving spiders build their circular webs high above the ground to catch flying insects. They are mainly nocturnal spiders, doing the repair and building of their webs at night. Many orb weavers tear down and eat their web each night. They rest for a bit, and then spin a new web in the same spot.

FUNNEL WEBS:



Funnel web spiders often build their non-sticky webs in the grass or between rocks. They hide inside the center of the web and wait for their prey to come by. They run out, grab it, and pull it deep inside.

Do spiders make more than one kind of web?

Many wonder if a spider can spin more than one type of web. The answer is no. Spiders spin webs from instinct, or built-in instructions. They are born knowing how to spin a certain kind of web. A spider that makes an orb web can't make a funnel web and vice versa. While they don't come up with their web's design, spiders do adjust the size and shape of it to fit the location